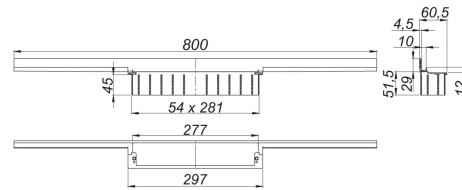
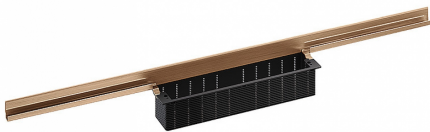


23. September 2020

DALLMER**shower channel CeraWall Individual red gold matt, 800 mm**

Product No. **536891**
 EAN: 4001636536891
 Discount group: 11



for installation with drain body DallFlex, DallFlex Plan, DallFlex vertical and shower underlay DallFlex Wall, DallFlex Wall Plan.
 Concealed channel with integrated fall, for installation at the junction of wall and floor.
 Suitable for floor and wall finish of 12 – 24 mm (including adhesive), length can be adjusted by one millimeter.

specification

- self-adhesive security tape S 3 with cut-resistant stainless steel mesh and sound insulation
- accessories for installation and positioning
- scriber template
- construction and sealing adhesive
- temporary blanking plate

Material

304 stainless steel, PVD coating in red gold matt

Ordering CeraWall Individual:

Please order drain body DallFlex or shower underlay DallFlex Wall + shower channel CeraWall Individual + cover plate as three components.

| Product No. | Description | Dimensions |
|-------------|--|------------|
| 537034 | Cover plate CeraWall Individual Design red gold matt | |
| 537027 | cover plate CeraWall Individual red gold matt | |
| 537157 | Drain body CeraFlex Plan, DN 40 | DN 40 |
| 537164 | Drain body CeraFlex vertical, DN 50 | DN 50 |
| 537140 | Drain body CeraFlex, DN 50 | DN 50 |

23. September 2020

DALLMER

| | | |
|--------|---|-------|
| 539304 | Drain body DallFlex EPS assembled, DN 50 | DN 50 |
| 539311 | Drain body DallFlex Plan EPS assembled, DN 40 | DN 40 |
| 539014 | Drain body DallFlex Plan, DN 40 | DN 40 |
| 539076 | drain body DallFlex vertical, DN 50 | DN 50 |
| 539007 | drain body DallFlex, DN 50 | DN 50 |