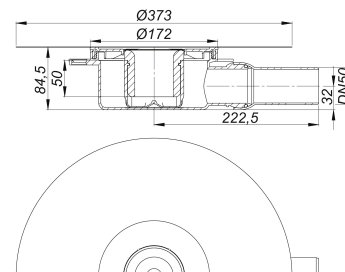
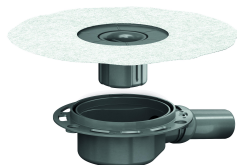


DallDrain DN 50 drain body

Part number: 517210
 GTIN: 4001636517210
 Rebate group: 6



Description:

DallDrain DN 50 drain body
 conforming to DIN EN 1253

For installation with gratings DallDrain, raising piece DallDrain. Outlet DN 50 horizontal, with ball-joint, adjustable from 0 – 15 degrees.

Specification

- Integrated screed anchoring
- Flexible, click-in sealing sleeve for secure connection to bonded and sheet waterproofing conforming to DIN 18534
- Fully removable, two-piece trap insert and rodding eye, 50 mm water seal (conforming to DIN EN 1253)
- Temporary blanking plate

Material

Polypropylene drain body and outlet, highly impact-resistant

Can be used with sound insulation mat DallDrain (part no. 517326) and mounting aid DallDrain (part no. 517319). Can be connected to British standard pipework with adaptor part No. 880727.

Can be connected to British standard pipework with adaptor part No. 880727.

Flow rates tested to:

Nominal diameter	Product standard	Min. flow rate according to norm	Water level according to norm	Flow rate at water level 10 mm	Flow rate at water level 20 mm	Drainage capacity
DN 50	DIN EN 1253	0.80 l/s	20.00 mm	0.65 l/s	0.92 l/s	0.92 l/s

Spare parts:

517357 trap insert DallDrain

517579 floor drain DallDrain Select OM, DN 50,