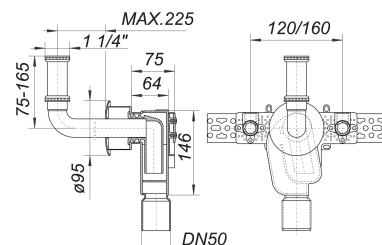


concealed trap type 310 CR, 1 1/4" x DN 50

Part number: 130327

GTIN: 4001636130327

Rebate group: 1



Description:

concealed trap type 310 CR, 1 1/4" x DN 50
conforming to DIN 19541

specification:

- space saving built-in trap body
- sound-absorbing backing plate
- fixing bracket
- 2 brass elbows for water supply
- height adjustable inlet
- escutcheon
- removable trap insert

material:

trap in polypropylene

inlet c.p. brass, escutcheon stainless steel

If installed with only sound insulated contact against the building structure, the requirements of all classes of sound proofing confirming to DIN 4109.10, table 1 and 2 are fulfilled.

Spare parts:

140005 elbow types 320, 1 1/4" x DN 32

140029 elbow types 321, 1 1/4" x DN 32

140333 elbow types 320 PC CR, 1 1/4" x DN 32

143020 trap insert for 300, 310